

A

BETTER

CITY



STATE OF THE

BUILT ENVIRONMENT

CONFERENCE

TUESDAY, JUNE 7, 2016 | SEAPORT BOSTON HOTEL

#ABCSBE

@ABetterCity

**A
BETTER
CITY**

WELCOME

STATE OF THE BUILT ENVIRONMENT CONFERENCE

Dear Attendees,

Thank you for joining us, and we welcome you to our first inaugural conference assessing the State of Greater Boston's Built Environment. We hope that this conference, in conjunction with the release of the State of the Built Environment Report, will help catalyze planning, policies, and actions to sustain and grow Boston's regional economy, global competitiveness, and quality of life.

The report and panel presentations will help us form a better understanding of both present and future opportunities and challenges facing the region's infrastructure. We also look forward to hearing from you. Your engagement in the conference and breakout sessions will help give us and conferees a sense of your priorities and actions related to improving Greater Boston's built environment.

Collaborating with you, our colleagues in the business community, government, and other stakeholders, will serve as a cornerstone of A Better City's efforts. Together we can shape solutions to address our immediate and future challenges and develop a 21st Century infrastructure system.

Sincerely,



Richard A. Dimino
President & CEO of A Better City



REPORT HIGHLIGHTS

STATE OF THE BUILT ENVIRONMENT



KEY FINDINGS FOR THE GREATER BOSTON REGION

Air Travel

If passenger air travel continues to grow at the same pace as it did over the last decade, Logan Airport will have to find a way to handle 63 % more passengers on domestic and international flights.

Commuting

Between 2010 and 2030, there will be an additional 117,000 commuters – 5.2 % more than the 2.25 million in the labor force from 2010.

Electricity

An additional 1.25 million megawatt hours of service will be needed to accommodate a 10.2 % increase in residential service and a 27.7 % increase in commercial and industrial use. This amounts to an overall 17.4 % increase in electric power to the Greater Boston grid.

Highway Use

A projected 80,000 more automobiles, trucks, and tractor trailers are expected on Greater Boston's roads and highways by 2030, an increase of nearly 5 %.

Natural Gas

Residents and businesses are projected to have an increased demand of 14.3 % between 2010 and 2030.

Public Transit

We expect a 6.8 % increase in subway and bus/trolley use by commuters and a nearly 3 % increase in commuter rail use. The region can expect to accommodate at least 14,000 additional subway commuters, 11,000 additional bus and trolley commuters, and 1,000 additional daily commuter rail commuters.

Sea-Level Rise

Focused effort is needed to make areas along the Greater Boston sea coast more resilient to expected sea-level rise and storm surge that could inundate large swaths of the region.

Seaport

If the Conley Terminal is going to keep up with demand for seaport cargo, it will need to find a way to increase capacity by 93 % – increasing its ability to handle TEU containers from its current 181,000 per year to 350,000 per year by 2030.

Trash & Recycling

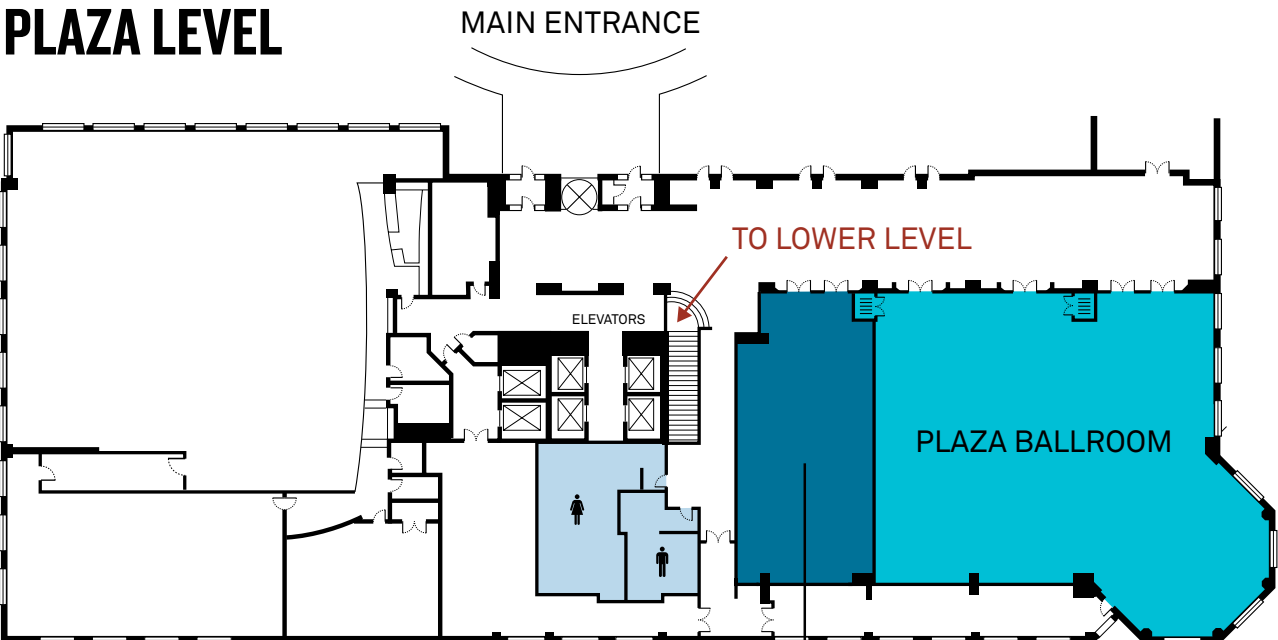
Overall, trash disposal and recycling facilities will need to process an additional 130,000 tons of waste per year – 7.9 % more in 2030 than in 2010.

Water Management

Water demand for residents, businesses, municipal governments and large non-profit institutions will increase nearly 13.5 %. Total sewage use will rise by only 5 % since we project no increase in average daily rain and snow runoff between 2010 and 2030.

SEAPORT HOTEL

PLAZA LEVEL



LOWER LEVEL



AGENDA

STATE OF THE BUILT ENVIRONMENT CONFERENCE



8:00 – 8:30 AM

BREAKFAST & REGISTRATION

8:30 – 9:30 AM

STATE OF THE BUILT ENVIRONMENT KICK-OFF

Plaza Ballroom

Opening Remarks

Michael Cantalupa, Senior Vice President, Development,
Boston Properties

State of the Built Environment Report Overview

Barry Bluestone, Senior Research Associate, Northeastern
University
Richard Dimino, President & CEO, A Better City

9:30 – 10:30 AM

GREATER BOSTON'S INFRASTRUCTURE NEEDS

Perspectives from Government Leaders Panel

Plaza Ballroom

Moderator: Bruce Mohl, Editor, Commonwealth Magazine

Panelists:

Joseph Aiello

Chair, MBTA Fiscal Management and Control Board

Thomas Glynn

Chief Executive Officer, Massachusetts Port Authority

Judith Judson

Commissioner, MA Department of Energy Resources

Fred Laskey

Executive Director, MA Water Resource Authority

Sara Myerson

Director of Planning, Boston Redevelopment Authority

10:45 AM – 12:00 PM

TAKING ON THE CHALLENGE- FOCUS SESSIONS

The Next 20 Years Of Infrastructure

Plaza Ballroom A

Moderator: Chris Osgood, Chief of Streets, City of Boston

Respondents:

Abbie Goodman, Executive Director, American Council of
Engineering Companies of MA
Mary Skelton Roberts, Senior Program Advisor, Climate,
Barr Foundation
Marilyn Swartz-Lloyd, President & CEO, MASCO

Growing Demand, Shaping Land

Seaport Ballroom A

Moderator: Marc Draisen, Executive Director, MAPC

Respondents:

Bryan Koop, Executive Vice President, Boston Properties
Richard McGuinness, Deputy Director for Waterfront Planning,
Boston Redevelopment Authority

Powering our Future

Seaport Ballroom B

Moderator: Bud Ris, Senior Advisor on Climate Change,
Barr Foundation

Respondents:

Tim Roughan, Director of Energy and Environmental Policy,
National Grid
Jeremy McDiarmid, Senior Director of Innovation & Industry
Support, Massachusetts Clean Energy Center
Mariella Puerto, Senior Program Advisor, Climate,
Barr Foundation

12:15 – 1:00 PM

LUNCH & CONFERENCE COMMENCEMENT

Plaza Ballroom

Keynote Address

Massachusetts President of the Senate Stanley Rosenberg

Closing Remarks

Richard Dimino, President & CEO, A Better City

OPENING REMARKS



MICHAEL CANTALUPA

#BostonProperties

Senior Vice President,
Development, Boston Properties

KICK-OFF & REPORT OVERVIEW



RICK DIMINO

@ABetterCity

President & CEO,
A Better City



BARRY BLUESTONE

@BarryBluestone

Senior Research Associate,
Dukakis Center for Urban & Regional Policy
Northeastern University

GREATER BOSTON'S INFRASTRUCTURE NEEDS



FACILITATOR

BRUCE MOHL

@BruceMohl

Editor,
CommonWealth Magazine



PANELIST

JOSEPH AIELLO

@MBTA

Chair,
MBTA Fiscal Management Control Board



PANELIST

THOMAS GLYNN

@Massport

Chief Executive Officer,
Massachusetts Port Authority



PANELIST

JUDITH JUDSON

@MassDOER

Commissioner,
MA Department of Energy Resources



PANELIST

FRED LASKEY

@MWRA_update

Executive Director,
MA Water Resource Authority



PANELIST

SARA MYERSON

@BostonRevelop

Director of Planning,
Boston Redevelopment Authority

FOCUS SESSION



THE NEXT 20 YEARS OF

INFRASTRUCTURE

Plaza Ballroom A

For the past year, public debates on infrastructure have largely focused on repairing the MBTA. Across the United States, there is a growing concern with the age and condition of our nation's water networks. During this

session local experts will present their viewpoints and engage with the audience on prioritizes and challenges in Greater Boston's surface transportation system, public transit, and water systems.

- As we think about the next twenty years of infrastructure, what are the top project needs to support our future economy and high quality of life in the region? What are we doing right? What are we forgetting?
- How can we address the lack of capacity in Greater Boston's transportation systems to meet projected demand?
- To what extent can changes in transit mode reduce the need for expanding roads and highways to avoid turning severe congestion into outright gridlock?
- To what extent can the MBTA increase its ridership by improving technology?
- Can other airports besides Logan be equipped to handle more domestic & international travel and more air cargo?
- What are the key conservation strategies & policies that should be in place to ensure our future water supply & quality are being met?



FACILITATOR

CHRIS OSGOOD

@CityOfBoston

Chief of Streets,
City of Boston



RESPONDENT

ABBIE GOODMAN

@AbbieGoodman

Executive Director,
American Council of Engineering Companies of MA



RESPONDENT

MARY SKELTON-ROBERTS

@Marytweets2

Senior Program Advisor, Climate,
Barr Foundation



RESPONDENT

MARILYN SWARTZ-LLOYD

@MASCOLMA

President & CEO,
MASCO

A

BETTER
CITY

FOCUS SESSION

GROWING DEMAND,

SHAPING LAND

Seaport Ballroom A

Analysis shows that despite the density in Eastern Massachusetts, there is available land that could be developed. But is that available land appropriate for development and in the right place? In this session, we will ask:

- How do we ensure that the region's land use and zoning strategies will emphasize live, work, and play to minimize impacts on transportation and provide for greater land conservation?
- Is it more beneficial for the region to encourage compact development than allowing sprawl?
- What are the social, environmental, transportation, and economic implications of future land development?
- What patterns will be determined by market forces and what patterns need to be further regulated?



FACILITATOR

MARC DRAISEN

@MAPCMetroBoston

Executive Director, Metropolitan Area Planning Commission



RESPONDENT

BRYAN KOOP

@koop_bjk

Executive Vice President, Boston Properties



RESPONDENT

RICHARD MCGUINNESS

@BostonRevelop

Deputy Director for Waterfront Planning, Boston Redevelopment Authority

FOCUS SESSION



POWERING OUR

FUTURE

Seaport Ballroom B

Massachusetts's energy system is at a crossroads. The region's energy costs are well above the national average, coal and nuclear power plants are retiring, and we are becoming increasingly dependent on natural gas. At the

same time, significant forces are exerting pressure on decision makers to diversify and modernize our energy system. We plan to explore ideas to bridge the gap between the status quo and the energy system of the future.

- How much energy demand can be met through more efficient use of electricity and natural gas, and through increased use of other forms of electric generation including wind, solar, hydro, and perhaps tidal?
- What combined efforts can be developed to reduce emissions and address the resiliency of the built environment?
- What types of technologies and policies do we need to increase supply while improving cost and reliability and work towards addressing the state's carbon reduction goals?
- What is the role of Boston's innovation community in driving us toward breakthrough energy technologies?
- What institutional changes will help get to an affordable, clean, and reliable energy future?
- By taking sea-level rise seriously, how do we build infrastructure that allows us to avoid the consequences of storm surge of the type that flooded New York City during Hurricane Sandy?



FACILITATOR

BUD RIS

@BarrFdn

Senior Advisor on Climate Change,
Barr Foundation



RESPONDENT

MARIELLA PUERTO

@MariellaPuerto

Senior Program Advisor, Climate,
Barr Foundation



RESPONDENT

JEREMY MCDIARMID

@MassCEC

Senior Director, Innovation & Industry
Support, Massachusetts Clean Energy Center



RESPONDENT

TIM ROUGHAN

@NationalGridUS

Director of Energy & Environmental Policy,
National Grid

**A
BETTER
CITY**

KEYNOTE SPEAKER

STATE OF THE BUILT ENVIRONMENT CONFERENCE

MASSACHUSETTS SENATE PRESIDENT

STANLEY ROSENBERG

@SenStan



Senator Stanley C. Rosenberg was elected 93rd President of the Massachusetts Senate by his colleagues in January 2015. Rosenberg was elected to the Massachusetts House in 1987 and then to the Senate in 1991, where his colleagues have entrusted him with leadership positions such as Majority Leader and Chair of the Senate Committee on Ways and Means, Chair of the Election Laws Committee, Chair of the Banking Committee, Assistant Majority Leader, and as the Senate's first President Pro Tempore.

In his time as President, Rosenberg has transformed the culture of the Senate through a model he calls "Shared Leadership," which encourages participation and cooperation. He has embraced technology and community outreach, creating a more accessible, modern and engaged Senate which reacts quickly to the needs of voters. Senate President Rosenberg has already delivered an expansion to the state's earned income tax credit and new legislation to address the current opioid crisis throughout the Commonwealth. Many key issues examined by the State of the Built Environment Report – specifically as the region's future energy needs, climate change resiliency plans, and economic development strategies – are top priorities for the Senate President this legislative session and will be debated by the Senate in the next few weeks.

ABOUT US

WE ARE A BETTER CITY



IMAGINE A BRIGHT FUTURE

MAKE IT

Our members have a seat at the table and a voice in making Greater Boston into a strong, prosperous, and sustainable region that supports economic growth, attracts new businesses and provides a high quality of life for residents and visitors.

A REALITY

LEARN MORE

For more details about A Better City and our vision, please visit us online:

www.abettercity.org

OUR PRIORITIES

Transportation & Infrastructure

A well-managed and adequately funded regional transportation infrastructure is critical to economic vitality and growth, and is a top criteria considered when businesses and skilled workers make location decisions.

Land Use & Development

Strategies for land development, zoning, access, environmental regulations and housing are critical components of an integrated, effective approach to regional growth.

Energy & Environment

Efficient, sustainable, and affordable energy is essential for long-term economic growth. A plan to address climate change and resiliency is needed.





A SPECIAL THANK YOU TO OUR

2016 SPONSORS



SEAPORT

HOTEL & WORLD TRADE CENTER

HOST

PATRONS

AECOM

ELKUS | MANFREDI
ARCHITECTS

 **Stantec**

BENEFACTORS

HNTB

HALEY
ALDRICH

KEVILLE
ENTERPRISES

SMMA

 **vhb**



33 Broad Street, Suite 300
Boston, MA 02109
617.502.6240
www.abettercity.org